


ENTER THE INNER CIRCLE

ELDECO 
INNER
CIRCLE

Exclusive plots at Estate One





Join the league of extraordinary elite

Your every move reflects your distinctive stature. Now let your address announce to the world that you settle only for the best in class. Presenting Eldeco Inner Circle, exclusive premium residential plots for the upper crust of the society. Located within Eldeco Estate One - the most premium township that is poised to become a benchmark for high-end living in Panipat, it has everything to mark your impression.

Eldeco Inner Circle is all set to become the future residential destination for those who seek exclusivity cut out for the elite. Surrounded with acres of sheer luxury, Eldeco Inner Circle has been developed with the best infrastructure, modern amenities and the luxuries of a big city, all inside an access-controlled, gated complex with two-tier security.

Now you do not have to wait for years for your Neighbourhood to get developed

Normally whenever one considers buying a residential plot, it is located in a far-flung area that is neither livable nor has an adequate development in and around it. More often it is just a piece of barren land that hopefully will get developed at its own pace.

We, at Eldeco, understand the genuine need for such a residential plot that is located well inside a fully developed area. Inner Circle is a collection of such exclusive plots in a gated enclave inside Eldeco Estate One.





Towards Karnal

G.T. Karnal Road

Towards Panipat Town



Clock Tower Arcade (Commercial)

Future Development (2 acres)

Main Entrance

2nd Entrance

Taxi stand



Gate A

30mts. Wide Road

12mts. Wide Road

12mts. Wide Road

12mts. Wide Road

12mts. Wide Road

12mts. Wide Road

12mts. Wide Road

12mts. Wide Road

12mts. Wide Road

12mts. Wide Road

12mts. Wide Road

12mts. Wide Road

12mts. Wide Road

12mts. Wide Road

12mts. Wide Road

12mts. Wide Road

12mts. Wide Road

12mts. Wide Road

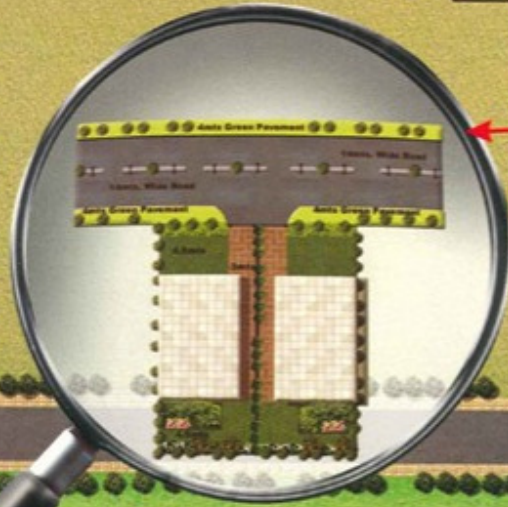
12mts. Wide Road

12mts. Wide Road

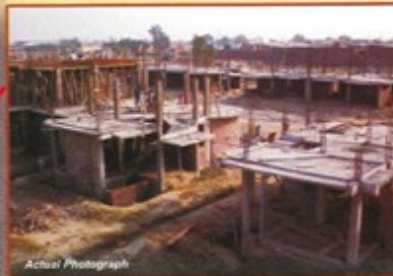
12mts. Wide Road

12mts. Wide Road

12mts. Wide Road



The above is an artist's impression. The perspective in colours shown above are indicative and subject to change.



DETAILS OF PLOTS

COLOR	TYPE	SIZE IN METER	AREA IN SQ. METER	AREA IN SQ. YARDS	NOS.
	A2	12.58 X 24.22	305 SQ.MT	365 SQ.YRDS	18
	Q1	11.20 X 33.00	372 SQ.MT	444 SQ.YRDS	13
	H1	11.90 X 28.83	343 SQ.MT	410 SQ.YRDS	14
	J1	14.56 X 38.28	557 SQ.MT	667 SQ.YRDS	09

An exclusive area that is secure and livable from day one

Eldeco Inner Circle is an area of exclusive residential plots comprising 8 acres within the 180 acre Eldeco Estate One. It is a gated complex that enjoys a 2nd tier of access control in addition to the main gate of Eldeco Estate One. This unprecedented "build and live" concept is the only one of its kind available for residential plots. With 360 villas already built around it, you can start building your dream home without waiting for the surrounding area to get developed. It has a well-planned sewerage system, water supply, drainage system, power, roads and landscaped greens in place.

Better amenities for a better lifestyle

- Prime location on G.T. Karnal Road compared to any other residential development being developed in far-flung areas
- A breathtaking entrance area with spectacular clock tower
- Comprehensive lifestyle amenities like shopping area, club and school



The perfect location for an exclusive lifestyle

Eldeco Inner Circle is strategically situated on the G.T. Karnal Road with quick and easy access through a new flyover just five minutes away from the town centre and Panipat city. It is well connected with all the nearby places including Karnal and Delhi. Be a part of the Inner Circle and add another dimension to your illustrious lifestyle.

The premium residential plot sizes

365 sq. yards

444 sq. yards

410 sq. yards

667 sq. yards



Perfecting the art of building - The Eldeco Group



Eldeco Olympia, Expressway, Noida



Citadel at Eldeco Green Meadows, Greater Noida



Eldeco County, Sector 19, Sonapat



Eldeco Utopia, Expressway, Noida



Eldeco Amantran, Sector 119, Noida



Upcoming Project, Sector Omicron, Gr. Noida

Founded by Mr. S.K. Garg, Eldeco Group has been at the forefront of real estate development in North India since 1975. The group is synonymous with timely and quality delivery in a number of cities like Lucknow, Kanpur, Agra, Noida, Greater Noida and the NCR of Delhi. More than 120 projects spanning townships, high-rise condominiums, townhouses, malls and office complexes have been delivered. The cumulative constructed area stands at a staggering 20 million sq.ft. Currently, apart from the towns mentioned above, Eldeco is developing integrated townships in Panipat, Sonapat, Ludhiana, Jalandhar and Jhansi. The unique 1200 acres state-of-the-art Eldeco Sidcul Industrial Park at Sitarganj, Uttarakhand and the 2500 acres special economic zone at Amravati, Maharashtra, mark Eldeco's entry into the industrial park space.

Eldeco's transparent and principle-driven business philosophy has been widely recognised. Its commitment to quality has earned Eldeco Infrastructure & Properties Ltd. the ISO 9001 certification and the distinction of being the first developer in North India to get the DR2 rating from ICRA (associate to Moody's in India). Eldeco stands firm in its commitment to 'creating value and cementing trust', and is heading towards ever-greater success.







Registered Office:

SU 12-13, Bhikaiji Cama Bhawan
Bhikaiji Cama Place, New Delhi-110066.
Tel.: 2616 0081/2/3, 4165 9001. Fax: 2616 0084.
Site off: Sec40, G.T.Karnal Road, Panipat
Email: contact@eldecoproperties.com
Website: www.eldecogroup.com

